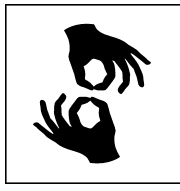


Person who uses a service animal

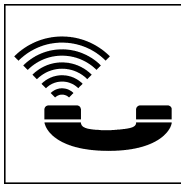
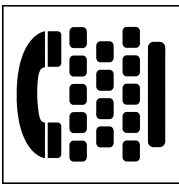
Person who uses hearing aids

Person who has a vision impairment

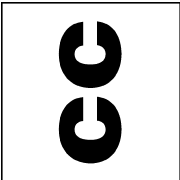
Person who uses adaptive computer hardware or software



# People with Sensory Impairments



Person who uses sign language

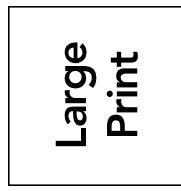


Person who can read using Braille

Person who uses a TTY



Person who participates in adaptive sports



Person who uses a personal assistant at home, work or school

Person who uses a service animal

Person who uses crutches, a cane, or a walker

Person who uses adaptive computer hardware or software

Person who uses adaptive driving equipment

# People with Mobility Impairments

Person who uses a wheelchair or scooter



Person who participates in adaptive sports

Person who uses medication to manage his/her disability

Person who uses a personal assistant at home, work or school

Person who uses a prosthesis, or a leg/hand/arm brace

Person who uses a personal assistant at home, work or school	Person who has a developmental disability	Person who has ADD/ADHD
Person who uses a service animal		Person who uses adaptive computer hardware or software

# People with Cognitive Impairments or Mental Health Impairments

Person who has a behavior / mental health disability	Person who has a learning disability	Person who participates in adaptive sports
Person who has a Traumatic Brain Injury (TBI)	Person who uses medication to manage his/her disability	Person who experiences memory loss

Person who uses medication to manage his/her disability

Person who has epilepsy

Person who has environmental illness / multiple chemical sensitivity

# People with

# Other Health Impairments

Person who has diabetes

Person who is a burn survivor

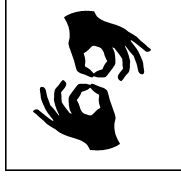
Person who uses a service animal

Person who participates in adaptive sports

Person who has asthma

Person who uses a personal assistant at home, work or school

Person who has  
more than one type  
of disability



Person who uses  
medication to  
manage his/her  
disability

# People with

Person who uses  
adaptive computer  
hardware or  
software

# Multiple Disabilities

Person who uses a  
personal assistant  
at home, work or  
school

Person who uses  
accommodations at  
home, school, work  
or in the community

Person who  
participates in  
adaptive sports

